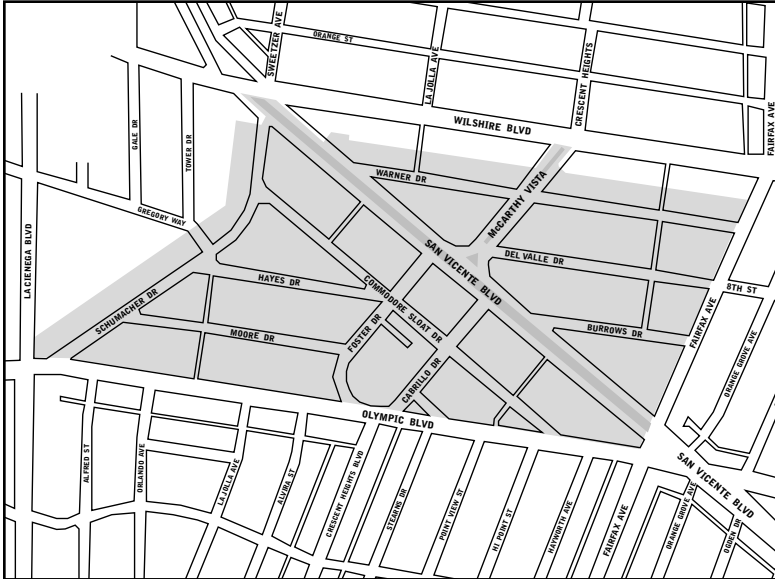
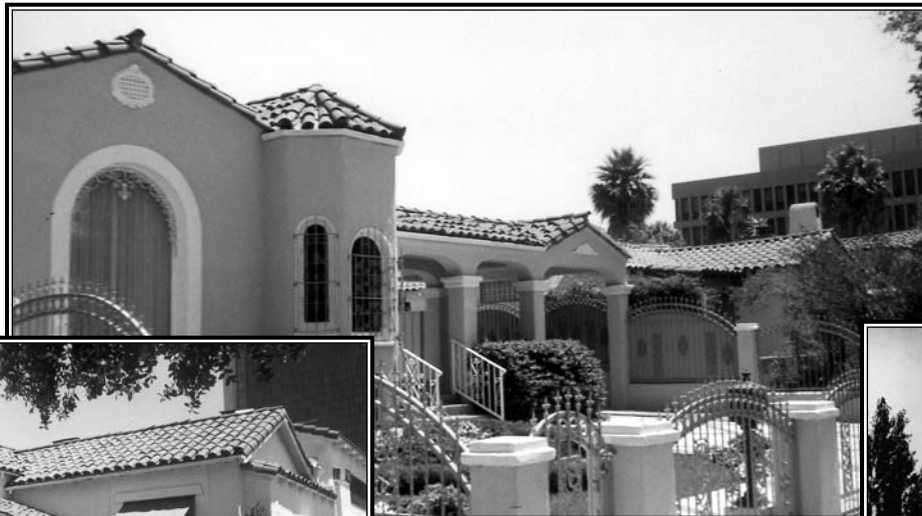


Carthay Circle (1998)



J HARVEY MCCARTHY DEVELOPED WHAT BECAME THE Carthay Circle HPOZ, originally called Carthay Center, between 1922 and 1944. McCarthy envisioned the neighborhood, named after a variation on his own surname, as a complete community with a church, elementary school, hotel, theater, and commercial center with a variety of housing opportunities. Infatuated with California's history, McCarthy named the streets in honor of prominent figures of the California Gold Rush. It was the first subdivision in Los Angeles to be planned with underground utilities, maintaining the streetscape free of the clutter of telephone poles and electric wires.

The architecture of this primarily residential HPOZ is dominated by the Spanish Colonial Revival style, in keeping with its founder's fascination with California history, although examples of the Tudor, French, and American Colonial Revival styles can also be found. The area was once home to the famed Carthay Circle Theater, site of such film premieres as *Snow White* and *Gone with the Wind*, which inspired the community to change the name from "Carthay Center" to "Carthay Circle."



Carthay Circle Theatre,
1926-1969.

Photos: Larry Underhill