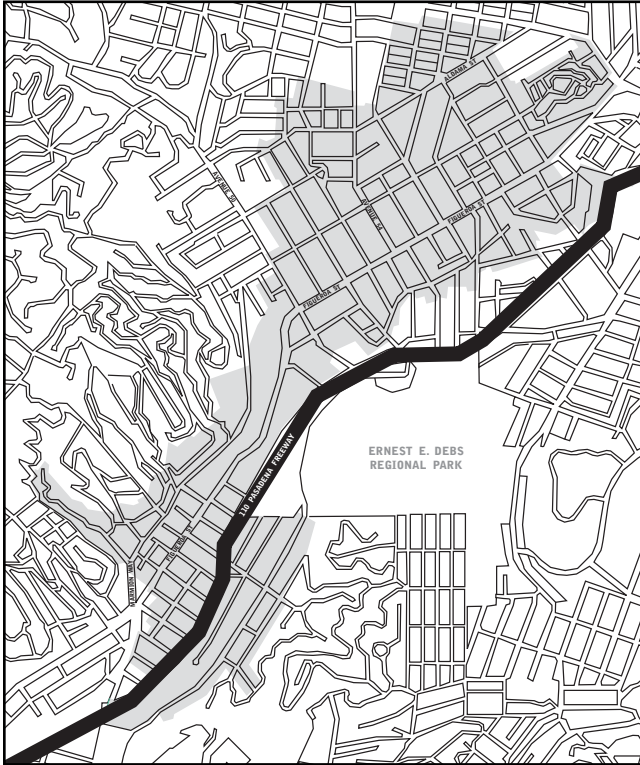
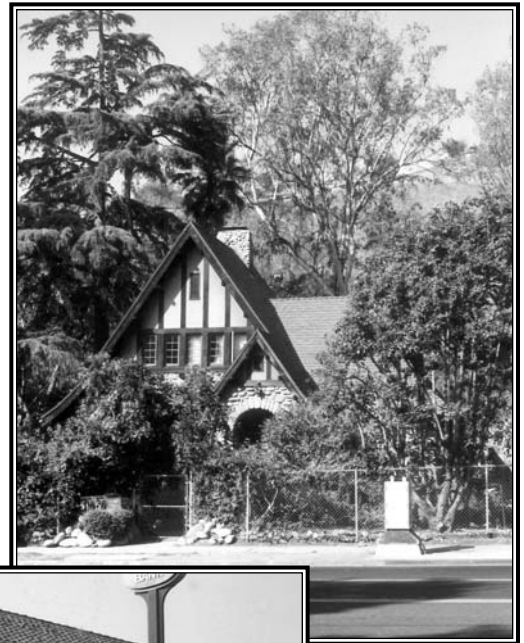


Highland Park (1994)



THE HIGHLAND PARK HPOZ IS LOCATED NORTHEAST OF downtown Los Angeles, in the Arroyo Seco. Local institutions and personalities, including Occidental College, the Judson Studios, and Charles Lummis, founder of the California Landmarks Club (one of the first historic preservation organizations in the United States), heavily influenced the development of this scenic community.

The largest of the city's HPOZs, it encompasses approximately 2,500 structures (including over 50 Los Angeles Historic-Cultural Monuments) and was the first HPOZ to include commercial buildings. The architecture of Highland Park encompasses nearly every style popular between the 1880s and 1940s—Queen Anne, Craftsman, Mission Revival, Shingle Style, and Tudor Revival—although the Arts and Crafts Movement particularly flourished in Highland Park, as evidenced by the wealth of Craftsman architecture in the area.



Photos: Larry Underhill