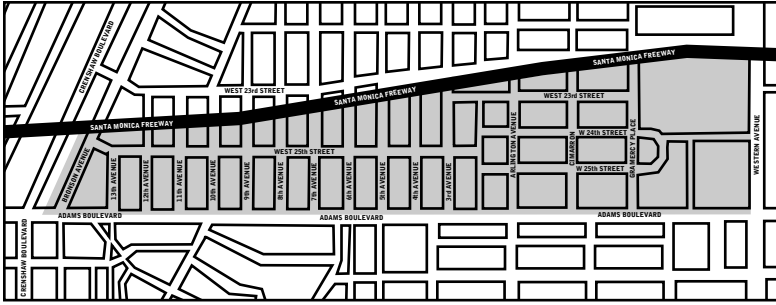


West Adams Terrace (2004)



THE WEST ADAMS TERRACE HPOZ IS A PRIMARILY residential community with a remarkably high concentration of historic homes. Like many of Los Angeles' historic areas, the neighborhood rose on former agricultural land at the turn of the twentieth century, its growth fueled by the rise of interurban transportation. The HPOZ contains four original subdivisions created between 1887 and 1910: Arlington Heights, Kinney Heights, West Adams Terrace, and Gramercy Park. The entire neighborhood is laid out in a grid except for Gramercy Park, a small cul-de-sac designed by the Olmsted brothers, sons of the legendary landscape architect Frederick Law Olmsted.

Developed between 1887 and 1951, West Adams Terrace reflects the evolution of architectural styles in Los Angeles over the first half of the twentieth century. The most common styles in the area include Queen Anne Revival, American Foursquare, Craftsman, American Colonial Revival, and Spanish Colonial Revival. Most of the original homes remain today, and the HPOZ contains at least a dozen individually listed Los Angeles Historic-Cultural Monuments.

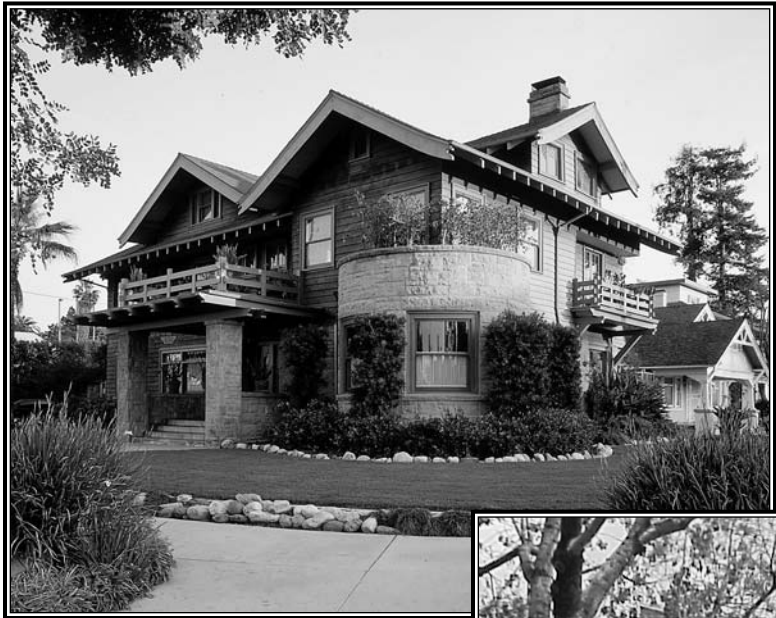


Photo: Larry Underhill



Photo: Frank Cooper



Photo: Larry Underhill