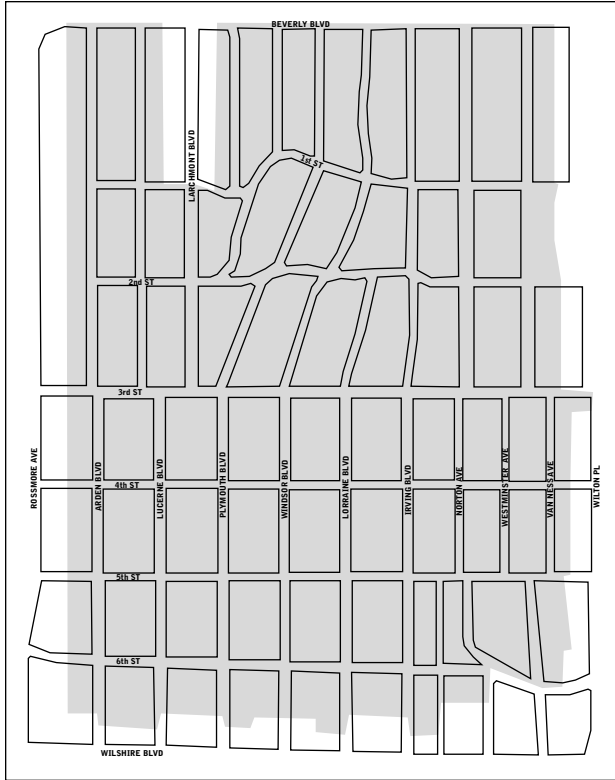
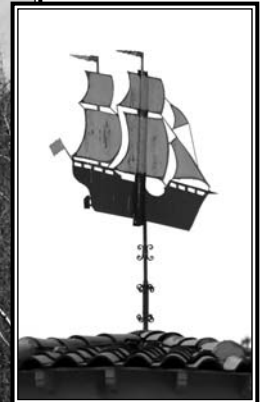
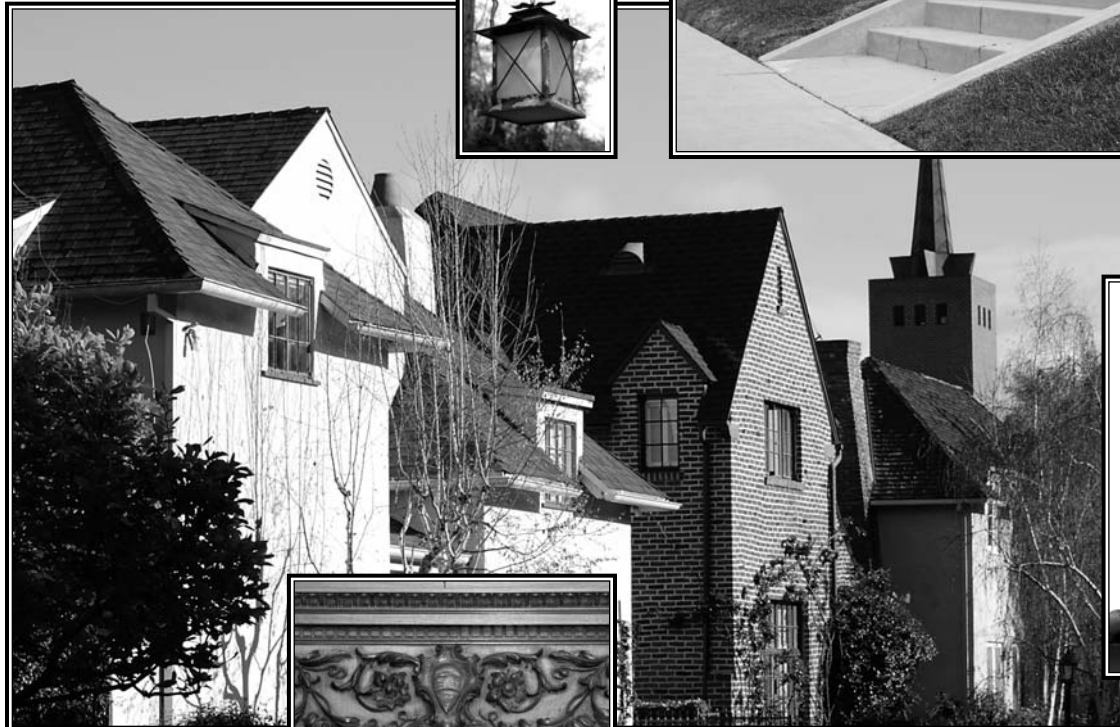


# Windsor Square (2007)



**T**HIS AREA NEXT TO HANCOCK PARK WAS PRIMARILY DEVELOPED DURING the 1910s and '20s by R. A. Rowan and Company, who marketed it as "The Residential Masterpiece" and a "vast community of palatial homes." Early residents of Windsor Square included silent-screen legend Harold Lloyd, actress Dolores Costello, and prominent developer Issac Van Nuys, and they lived in homes designed by Los Angeles' leading architects. An absence of alleys and underground utilities contributed to Windsor Square's image as a fashionable and idyllic community. In turn, the upscale nature of the neighborhood ensured architecture of a grand scale and high quality. Craftsman homes were the earliest popular style in the area, followed by several Period Revival styles, including Spanish, Mediterranean, and Tudor. Alongside the grand residences lay tree-lined streets of more modest houses. Regardless of scale, the fine homes of the Windsor Square HPOZ maintain their architectural integrity, and as a whole reflect the architectural development of Los Angeles in the 1910s and '20s.



Photos: Larry Underhill