

**Exhibit A: Before and after, arson fire of 1915 Harriman Residence,
Rancho Los Amigos**



1915 Harriman Residence, as photographed in 2012 by Los Angeles Conservancy



1915 Harriman Residence, following arson fire, as photographed in 2018 by Los Angeles Conservancy



Exhibit B: Mapping of proposed demolition of Historic District

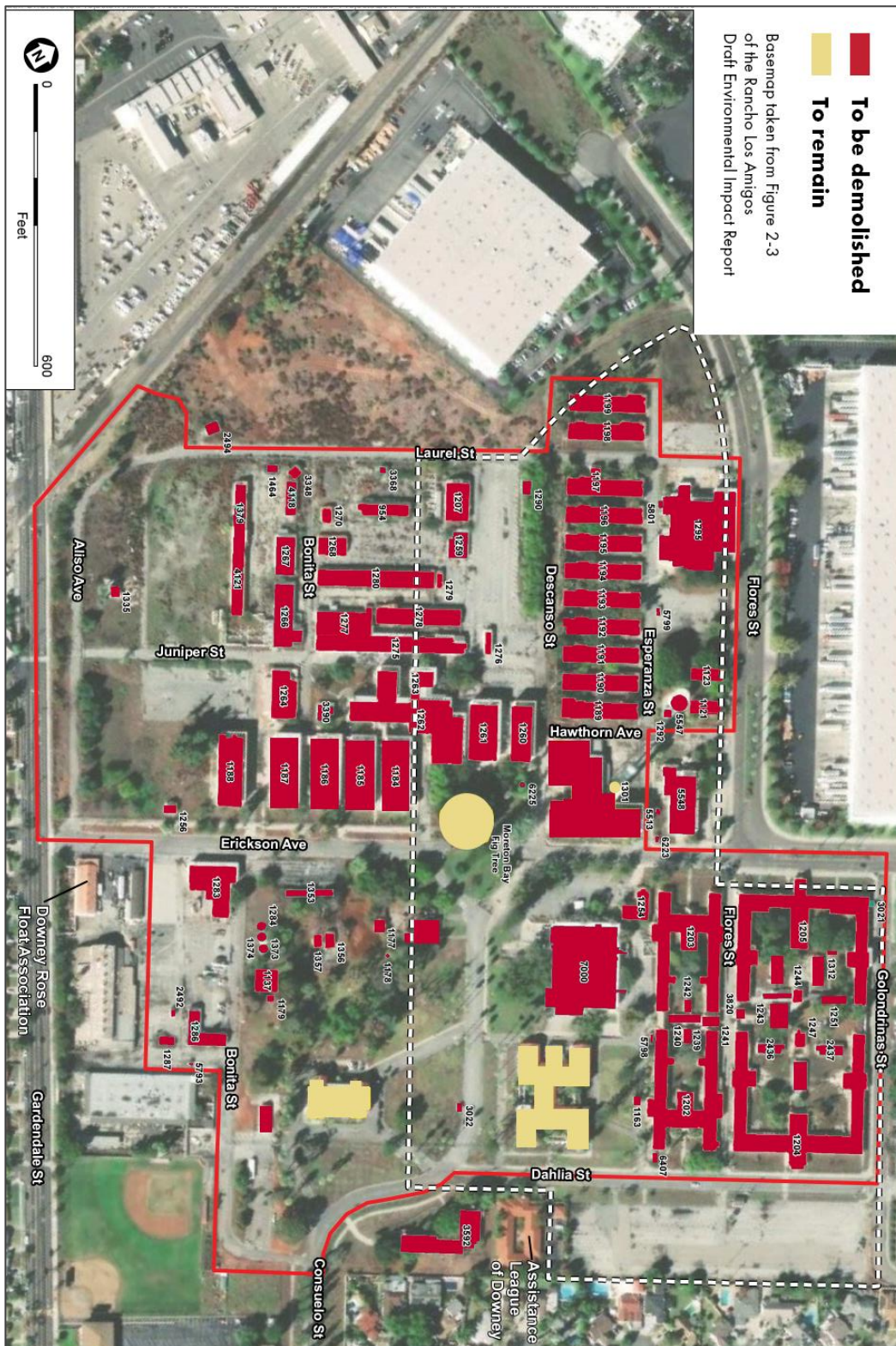


Exhibit C: Various points of entry and lack of security. Rancho Los Amigos, as photographed by Los Angeles Conservancy on November 20, 2019













