

Los Angeles Conservancy  
**WALKING  
TOURS**   
35th Anniversary · 1980–2015

## WOULD YOU BELIEVE L.A.? (REVISITED)

Downtown Walking Tours 35th Anniversary sponsored by:



Major funding for the Los Angeles Conservancy's programs is provided by the LaFetra Foundation and the Kenneth T. and Eileen L. Norris Foundation.



**LOS ANGELES  
CONSERVANCY**

523 West Sixth Street, Suite 826  
Los Angeles, CA 90014  
213.623.2489 · [laconservancy.org](http://laconservancy.org)

Media Partners:



Photos by Annie Laskey/L. A. Conservancy except as noted: Bradbury Building by Anthony Rubano, Orpheum Theatre and El Dorado Lofts by Adrian Scott Fine/L.A. Conservancy, Ace Hotel Downtown Los Angeles by Spencer Lowell, 433 Spring and Spring Arcade Building by Larry Underhill, Exchange Los Angeles from L.A. Conservancy archives.

© 2015 Los Angeles Conservancy  
Based on Would You Believe L.A.? written by Paul Gleye, with assistance from John Miller, Roger Hatheway, Margaret Bach, and Lois Grillo, 1978.

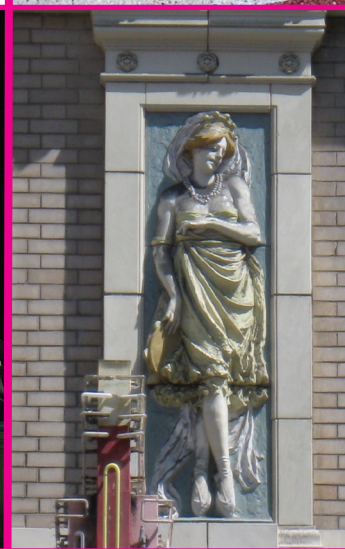


Since 1980, the Los Angeles Conservancy's walking tours have introduced over 175,000 Angelenos and visitors alike to the rich history and culture of downtown's architecture.

In celebration of the thirty-fifth anniversary of our walking tours, the Los Angeles Conservancy is revisiting our first-ever offering: a self-guided tour from 1978 called **Would You Believe L.A.?**

The tour map included fifty-nine different sites in the historic core of downtown, providing the basis for the Conservancy's first three docent-led tours. These three tours still take place regularly: Pershing Square Landmarks (now Historic Downtown), Broadway Historic Theatre District (now Broadway Theatre and Commercial District), and Palaces of Finance (now Downtown Renaissance).

In the years since **Would You Believe L.A.?** was created and the first walking tours began, downtown Los Angeles has undergone many changes. Some buildings have been lost; others erected. Neglected office towers have found new life as apartments and condos. Cafés, bars, art galleries, retail spaces, and grand movie palaces are coming back to life even as a construction boom is poised to radically change the city's skyline. A city is a living thing, and a city's architecture is a record of its life and times. Come celebrate it with us!



Tag your posts and photos with **#walkDTLA**

 **losangelesconservancy**

 **@laconservancy**

 **L.A. Conservancy Walking Tours**



## OLIVE STREET



### 1. MILLENNIUM BILTMORE HOTEL

515 S. Olive Street  
Schultze & Weaver, 1923 & 1928  
Tower addition: Landau Partnership, 1987  
*One of the most-filmed sites in L.A.*



### 2. PACMUTUAL

(originally Pacific Mutual Life Insurance Building)  
523 W. 6th Street  
Original building: John Parkinson, 1908 (remodel 1936)  
12-story addition: Dodd & Richards, 1921  
*Elegant office complex with many additions*



### 3. JAMES OVIATT BUILDING

617 S. Olive Street  
Walker & Eisen, 1928  
*Unique Art Deco forecourt and interior*

## HILL STREET



### 4. ANGELS FLIGHT™ RAILWAY

Hill Street between 3rd and 4th Streets  
Builder: Col. J. W. Eddy, 1901  
*Known as "The World's Shortest Railway"*



### 5. TITLE GUARANTEE BUILDING

411 W. 5th Street  
Parkinson & Parkinson, 1930  
*Stylish Art Deco with Gothic touches*



### 6. FOX JEWELRY PLAZA

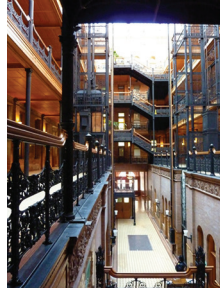
(originally William Fox Building)  
608 S. Hill Street  
S. Tilden Norton, 1932  
*Striking Art Deco exterior and lobby*

## BROADWAY



### 7. MILLION DOLLAR THEATRE

307 S. Broadway  
Albert C. Martin, 1918  
Interior: William Lee Woollett  
*One of the country's earliest "movie palaces"*



### 8. BRADBURY BUILDING

304 S. Broadway  
Sumner Hunt and/or George H. Wyman, 1893  
*A Victorian marvel*



### 9. GRAND CENTRAL MARKET

317 S. Broadway  
Homer Laughlin Building  
John Parkinson, 1897  
Laughlin Annex (Hill Street side): Harrison Albright, 1905  
*The market opened here in 1917*



### 10. ROXIE THEATRE

518 S. Broadway  
J. M. Cooper Co., 1931  
*The last theatre built on Broadway*



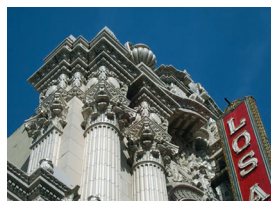
### 11. CAMEO THEATRE

(originally Clune's Broadway)  
528 S. Broadway  
Alfred F. Rosenheim, 1910  
*Early theatre built specifically for movies*



### 12. ARCADE THEATRE

(originally Pantages Theatre)  
Morgan and Walls, 1910  
534 S. Broadway  
*Once an important vaudeville house*



### 13. LOS ANGELES THEATRE

615 S. Broadway  
S. Charles Lee with S. Tilden Norton, 1931  
*As glamorous as any movie star*



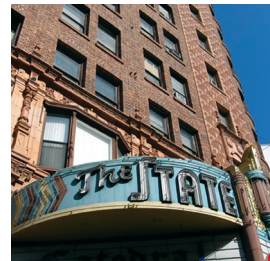
### 14. PALACE THEATRE

(originally Orpheum Theatre)  
630 S. Broadway  
G. Albert Lansburgh, 1911  
*Oldest remaining Orpheum in the country*



### 15. CLIFTON'S BROOKDALE

648 S. Broadway  
R. B. Young, 1904  
1935 interior: Plummer, Wurdeman and Becket  
*Beloved forest-themed cafeteria*



### 16. STATE THEATRE

(originally Loew's State Theatre)  
703 S. Broadway  
Weeks and Day, 1921  
*Was the most successful movie theatre on Broadway*

### 17. GLOBE THEATRE

(originally Morosco Theatre)  
744 S. Broadway  
Morgan, Walls, and Morgan, 1913  
Interior: Alfred F. Rosenheim  
*Traditional Beaux-Arts building and auditorium*



### 18. TOWER THEATRE

802 S. Broadway  
S. Charles Lee, 1927  
*The first theatre by legendary architect S. Charles Lee*

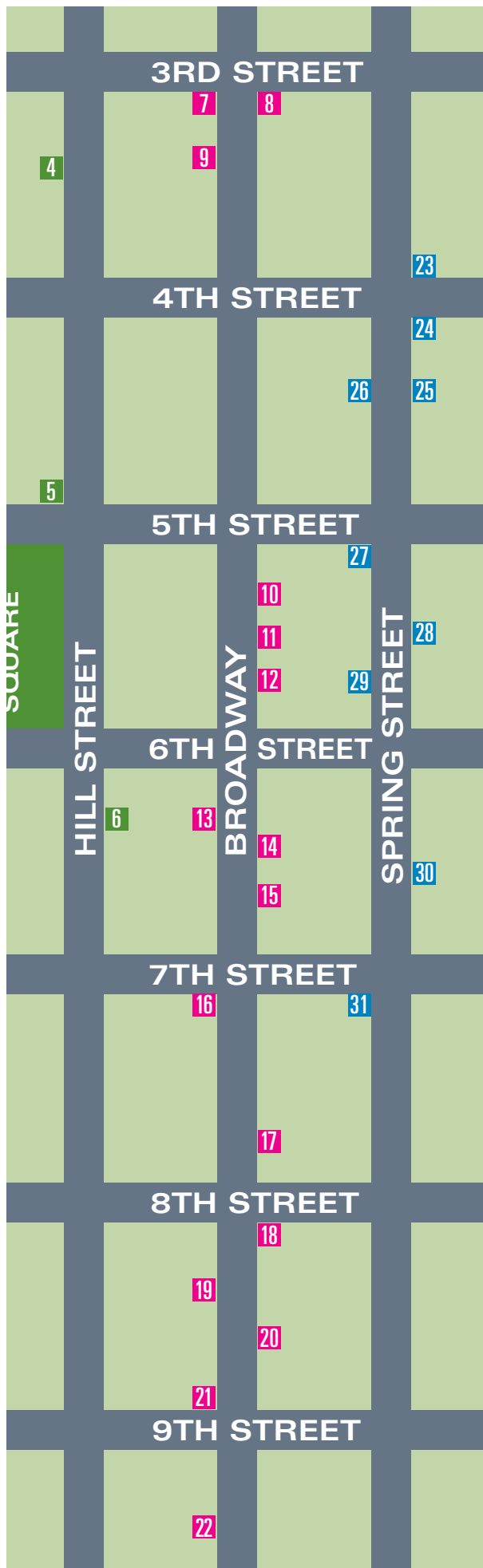


### 19. 801 BROADWAY

(originally Hamburger's Dept. Store)  
801 S. Broadway  
Alfred F. Rosenheim, 1906  
*Once the largest department store on the coast*

1  
2  
3  
OLIVE STREET  
PERSHING SQUARE





#### 20. ORPHEUM THEATRE

842 S. Broadway  
G. Albert Lansburgh, 1926  
*Elegant venue created for high-end vaudeville*



#### 21. EASTERN COLUMBIA BUILDING

849 S. Broadway  
Claud Beelman, 1930  
*Iconic Art Deco commercial design*



#### 22. THE THEATRE AT ACE HOTEL

(originally United Artists Theatre)  
929 S. Broadway  
Walker & Eisen, 1927  
Interior: C. Howard Crane  
*Extravagant Spanish Baroque building and auditorium*

### SPRING STREET



#### 23. HERMAN W. HELLMAN BUILDING

354 S. Spring Street  
Alfred F. Rosenheim, 1903  
*Beaux-Arts style with Victorian touches*



#### 24. CONTINENTAL BUILDING

(originally Braly Block)  
408 S. Spring Street  
John Parkinson, 1904  
*The tallest building in the city for decades*



#### 25. EL DORADO LOFTS

(originally Stowell Hotel)  
416 S. Spring Street  
Frederick Noonan and William Richards, 1913  
*Lovely Art Nouveau-style ornamentation*



#### 26. 433 SPRING

(originally Title Insurance and Trust Building)  
433 S. Spring Street  
Parkinson & Parkinson, 1928  
*Once known as the "Queen of Spring Street"*



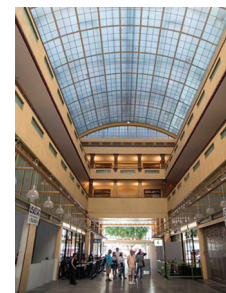
#### 27. HOTEL ALEXANDRIA

501 S. Spring Street  
John Parkinson, 1906 & 1911 (addition)  
*This storied hotel was home to silent film stars*



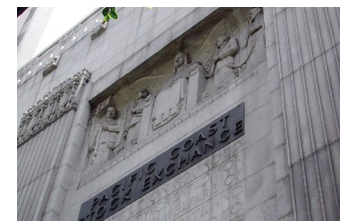
#### 28. LOS ANGELES THEATRE CENTER (LATC)

(originally Security National Bank Building)  
514 S. Spring Street  
John Parkinson, 1916  
Theatre addition: John Sergio Fisher, 1985  
*Former bank is now the lobby of a theatre complex*



#### 29. SPRING ARCADE BUILDING

(originally Broadway-Spring Arcade)  
541 S. Spring Street  
Kenneth McDonald and Maurice Couchot, 1924  
*1920s shopping arcade*



#### 30. EXCHANGE LOS ANGELES

(originally Pacific Coast Stock Exchange)  
618 S. Spring Street  
Samuel Lunden; John and Donald Parkinson, consulting architects, 1930  
*Monumental Art Deco architecture*



#### 31. VAN NUYS APARTMENTS

(originally I. N. Van Nuys Building)  
210 W. 7th Street  
Morgan and Walls, 1913  
*Classic Beaux-Arts grandeur*