



# LOS ANGELES CONSERVANCY NEWS



Nov/Dec 2017 • Volume 39 Number 6



Greg SooHoo, a Chinatown community member and Chinese American Museum volunteer and docent, discusses Chinese American history in Los Angeles at our 2016 special tour of L.A.'s Chinatown. Panel discussions, presentations, and direct participation by community members increasingly enrich our educational programming. Photo by Barry Schwartz.

## The Shifting Nature of Architectural Tours: Beyond Architecture

by Sarah Lann

The Los Angeles Conservancy has a long-standing tradition of hosting special educational tours to raise awareness of historic places and the need to preserve them. While our popular, ongoing weekend walking tours (such as Historic Downtown, Art Deco, and Union Station) focus on the historic center of Los Angeles, special tours, which occur only once and generally for a single day, have the ability to cover a wide variety of themes, architectural styles, and geographic areas. As the built environment—and the role of historic preservation—changes, our tours are also evolving to encompass much more than architecture.

The Conservancy's special tours have explored a vast range of topics throughout the years. In 1997, the Cruising Industrial Los Angeles tour introduced guests to historic manufacturing and other industrial sites. Spectacular Vernacular in 2006 examined the correlation between custom-designed postwar homes and their tract-housing counterparts. In 2008, *Noir-chitecture: A Hard-Boiled Tour* through the Historic City visited spots made famous by Los Angeles' noir fiction writers. In 2009, the tour with the unforgettable title, *It's a Mod, Mod, Mod, Mod City*, toured 1960s architecture in the South Bay.

Our tours have always imparted important stories of the places we visit. Yet increasingly, we're using new components to tell the stories of the communities and people who inhabit Los Angeles' neighborhoods, along with architecturally significant sites. These sites are part of the city's and its citizens' cultural heritage. Nowhere is that more true than for the residents who live in, work in, and use those buildings on a daily basis.

*Please see BEYOND ARCHITECTURE on page 6*

## Please Donate to the Preservation Advocacy Fund by December 31

by Liz Leshin

As a Conservancy member, you are part of a diverse community of supporters throughout L.A. County, and we are extremely grateful. Your commitment to our shared, tangible history inspires us to work harder to preserve and protect the full breadth of our region's cultural heritage.

Our advocacy work takes significant time and resources. The Conservancy's Preservation Advocacy Fund (PAF) goes above and beyond membership dues to make this work possible.

While we will never stop fighting for architectural icons, our work increasingly addresses places whose significance is not just architectural. Many places appear quite modest, yet have great cultural value and layers of history.

We're working to uncover these layers and tell complete histories of places that matter to all Angelenos. Your donations to PAF enable us to continue a wide range of efforts, including these recent examples.

### Pan American Bank

In April, the Pan American Bank building in unincorporated East Los Angeles was officially listed in the National Register of Historic Places following our successful nomination. It is one of the oldest continuously operating Latinx community banks in the country.

*Please see DONATE on page 6*

## I N S I D E

Conservancy News	2
Issues	3
Programs	4 - 5
Membership	7



**Los Angeles Conservancy**  
523 W. Sixth Street, Suite 826  
Los Angeles, California 90014  
(213) 623-2489 Fax: (213) 623-3909  
laconservancy.org

The Los Angeles Conservancy is a nonprofit membership organization that works through education and advocacy to recognize, preserve, and revitalize the historic architectural and cultural resources of Los Angeles County.

Stay connected!  
laconservancy.org  
facebook.com/losangelesconservancy  
twitter.com/laconservancy  
instagram.com/laconservancy

#### Board of Directors

Wesley Phoa, PhD, Chair of the Board  
Mike Deasy, Secretary  
Alice Carr, Treasurer and Chair-Elect  
James Camp, Chair, Advocacy Committee  
Maxine Greenspan, Chair, Development Committee  
Linda Brettler; Corinna Cherian; David Coker;  
Joy Forbes; Elizabeth Edwards Harris, PhD;  
Anna Jacobson; Diane Keaton; David Kopple;  
Roella Hsieh Louie; David C. Martin, FAIA;  
Andy Meyers; Eric Needleman; Stacy Paek;  
Bill E. Roschen, FAIA; Jan Westman; Raymond Wu

#### Advisory Council

Charmaine Atherton; Margaret Bach;  
Sally S. Beaudette; Bruce Corwin; Tim Disney;  
George A. V. Dunning; Amy Forbes;  
Douglas J. Gardner; Albert Greenstein;  
Greg Harless; Robert S. Harris, FAIA;  
Hernan Hernandez; Mary Kay Hight;  
Dr. Thomas S. Hines; Kathryn Welch Howe;  
Stephanie Kingsnorth, AIA, LEED AP;  
Michael LaFetra; Brenda Levin, FAIA;  
Ronald S. Lushing; Robert F. Maguire III;  
Christy McAvoy; Thomas R. Miller; Frank Romero;  
Jack Rubens; Alan Sieroty; Alison Silver; Joel Wachs;  
John H. Welborne; Roland A. Wiley, AIA;  
Ken Williams; Dr. Robert W. Winter

#### Lifetime Cornerstone

George A. V. Dunning  
Leonard Hill (1947 – 2016)  
Connie Humberger  
Stephen and Christy McAvoy  
John H. and Martha L. Welborne

#### Staff

Linda Dishman, President and CEO  
Sana Ahmed, Education Specialist  
Marcella Akop, Membership Associate  
Kate Andersen, Salesforce Administrator  
Adrian Scott Fine, Director of Advocacy  
Jessica Hodgdon, Digital Communications Manager  
Helen Huang, Receptionist  
Alex Inshishian, Program Coordinator  
Sarah Lann, Director of Education  
Liz Leshin, Director of Development  
Tiffany Narváez, PR and Marketing Manager  
Cindy Olnick, Director of Communications  
Jenelle Pope, Development Manager  
Bruce Scottom, Educational Outreach Coordinator  
Marcello Vavala, Preservation Associate

Major funding for the Los Angeles Conservancy's programs is provided by the LaFetra Foundation and the Kenneth T. and Eileen L. Norris Foundation.

## Give the Gift of Membership This Holiday Season

Looking for the perfect holiday gift for the L.A. history buff or architecture lover in your life? Give a gift membership! Each gift membership comes with a full year of benefits, including presales and discounts on events such as Last Remaining Seats and special tours.

You can purchase your gift membership online at [laconservancy.org/gift-memberships](http://laconservancy.org/gift-memberships). To buy more than one, please contact us for convenience (you can buy only one membership online at a time).

Please allow five business days for delivery by mail, and contact us if you'd like to receive the gift membership yourself (otherwise, we'll mail it directly to the recipient).

You can reach our membership team at [member@laconservancy.org](mailto:member@laconservancy.org) or (213) 430-4201. Thank you, and happy holidays!

## Preservation Award Applications Due December 1

Do you know of a particularly fantastic preservation project that deserves recognition? Nominate it for a 2018 Conservancy Preservation Award!

Applications are available at [laconservancy.org/awards](http://laconservancy.org/awards) and are due by **5 p.m. on Friday, December 1**.

We encourage applications that convey the power of historic preservation across L.A. County. We recognize large-scale projects, grassroots efforts, people, educational programs, and more. We'll honor the recipients at our 2018 Preservation Awards Luncheon on Wednesday, May 2.

For details and to apply, visit [laconservancy.org/awards](http://laconservancy.org/awards). Thanks, and good luck!

## Connect with the Conservancy Online

We make every effort to make this newsletter as comprehensive and timely as possible. But in reality, it's impossible for this printed piece to accommodate late-breaking news and opportunities. There's so much going on between these bi-monthly newsletters—new events open and sell out, buildings are threatened and rescued—and we want to make sure you know about it! The best way to stay informed about the programs and issues you care about is by connecting with us online.

### Do We Have Your Email Address?

We're communicating more often with members by email, to share timely offers and member perks. If you haven't updated your email address lately, please make sure we have your current address so we can reach you with important information. You can contact us at [member@laconservancy.org](mailto:member@laconservancy.org) or (213) 623-2489, or log into your account at [laconservancy.org](http://laconservancy.org) and change it in your profile.

### Email Subscriptions

Email subscribers are often the first to know about our programs and issues. You can subscribe to a range of email lists for information tailored to your interests, from general E-News (sent monthly) to Action Alerts, Events, Last Remaining Seats, and more (sent only as needed). Visit [laconservancy.org](http://laconservancy.org), click "Subscribe" in the top menu bar, and select the relevant list(s). Or, simply log into your account and edit your profile.

### Social Media

We want to hear from you—find us on Facebook, Twitter, and Instagram! You can connect with us and fellow Conservancy supporters by sharing posts and leaving comments.

Find us on Facebook at [facebook.com/losangelesconservancy](https://www.facebook.com/losangelesconservancy), and follow us on Twitter and Instagram as @LAConservancy.

## Preservation Issues

by Adrian Scott Fine and Marcello Vavala

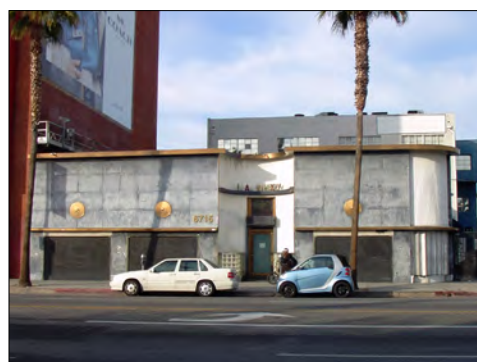
For more information about these and other preservation issues, please visit [laconservancy.org/important-issues](http://laconservancy.org/important-issues).

### Crossroads Hollywood

This summer, the Conservancy submitted comments on the Draft Environmental Impact Report (EIR) for the Crossroads Hollywood project. This eight-acre mixed-use project in the heart of Hollywood would be anchored by the historic Crossroads of the World at 6671 Sunset Boulevard, east of Highland Avenue.

The massive project, by Harridge Development Group and longtime property owner Morton La Kretz, includes more than 1.4 million square feet of new residential, office, hotel, retail, restaurant, and entertainment space. The project would construct three large towers, each between thirty and thirty-two stories. The inward-facing project is oriented along a pedestrian paseo. Rather than promoting vibrant street life along Sunset Boulevard, the project calls for the realignment of a portion of Las Palmas Avenue.

As proposed, the project would rehabilitate the Crossroads of the World and reintroduce retail to the complex, which has functioned primarily as office space since the 1950s. However, in order to accommodate new construction, the project would demolish more than half a dozen buildings that have been identified as eligible for listing in the California Register of Historical Resources. The project would also relocate one of the buildings in the Crossroads complex and demolish the California Register-eligible Hollywood Reporter Building, which has a



The Crossroads Hollywood project calls for the demolition of the Hollywood Reporter Building. Photo by Marcello Vavala/L.A. Conservancy.

pending Historic-Cultural Monument nomination. The Art Deco Society of Los Angeles submitted the nomination in direct response to the development threat.

The Draft EIR contained only one preservation alternative, which was narrowly defined and appeared to be designed to fail. The Conservancy is disappointed that more potentially feasible preservation alternatives were not evaluated. Similar projects have offered additional alternatives, including partial preservation that could meet all or most of the project objectives while reducing the impacts to at least some of the threatened cultural resources. We have met with representatives of the project team and will continue to push for a range of preservation alternatives for the project.

### Chuey Residence

The iconic Chuey Residence, designed by master architect Richard Neutra, is currently listed for sale, subject to bankruptcy court approval. The real estate listing was posted in August and originally contained language describing the property as “a truly unique development opportunity” that’s “ideal for a compound,” while omitting any details that the house was a masterwork by Richard Neutra.

Located at 2460 Sunset Plaza Drive, the International Style residence was constructed between 1956 and 1957. It was commissioned by the noted poet Josephine Ain Chuey and painter Robert Chuey. The home served as an intellectual and cultural gathering place for years as the setting for parties, poetry readings, and the showing of Robert Chuey’s paintings.

News that the Chuey Residence was being marketed as a teardown circulated widely online, prompting widespread concern about the future of this important residence.

The Conservancy submitted a disclosure letter to the listing agents for the property in September to make prospective buyers fully aware of the historical significance of the Chuey Residence, as well as any requirements under the California Environmental Quality Act (CEQA) if an owner proposes

a lot subdivision, demolition, and/or major alteration to the home.

The disclosure letter and widespread press coverage appear to have prompted a revision to the real estate listing, which has been updated to include details of the property’s historical significance and remove mention of any development opportunity. We are working to find a preservation-minded buyer and ensure the preservation of this very significant home.

### The Fig (Flower Drive Historic District)

A highly intact California Register historic district of 1920s-era apartment buildings is threatened by a new mixed-use development project.

The group of nineteen Period Revival-style fourplexes spans two blocks of Flower Drive, next to Exposition Park. All but two of the buildings contribute to the district’s significance.

Developer Ventus Group (formerly known as Spectrum) proposes to demolish nearly half of the district: the entire 3900 block of South Flower Drive. The homes would be replaced with a project called The Fig, four seven-story structures containing a hotel, student housing, mixed-income housing, and parking.

The Conservancy submitted comments on the project’s Notice of Preparation in 2016 and will comment on the Draft Environmental Impact Report (EIR) released in October.

The Conservancy has also met with representatives of the project team, with a focus on exploring meaningful preservation alternatives that reuse some of the contributing structures. While the heights of the hotel and parking structures have both been reduced to seven stories (from the originally proposed twenty-one and nine stories, respectively), the overall footprint of the project’s buildings has not changed.

## Special Walking Tour: Holiday Highlights

by Alex Inshishian

The sounds and sights of the holiday season are all around us. The glow of festive lights fills the air, wreaths hang on skyscrapers with care, and there's even an ice rink in Pershing Square. Downtown is beautiful during the holidays, so start the season off right by booking a holiday tour with the Conservancy.



Holiday decorations in the lobby of the historic Millennium Biltmore Hotel. Photo by Jessica Hodgdon/L.A. Conservancy.

This December, our regularly scheduled tours will be joined by Holiday Highlights, a ninety-minute holiday remix that brings some fan favorites together on one tour. Our highly knowledgeable docents will lead you through architectural delights such as the Millennium Biltmore Hotel and PacMutual Building, all beautifully decorated.

Get in the spirit dressed in your best holiday attire, and receive a special gift from the Conservancy!

Holiday Highlights takes place at 1 p.m. on Saturdays, December 2–30 and at 5:30 p.m. on Thursdays, December 7–28. Building interiors are subject to availability.

This tour is perfect for young people and families, and you can make a day of it downtown (see below).

### Holiday Highlights Tour Schedule

Saturdays, December 2–30  
1 p.m.

Thursdays, December 7–28  
5:30 p.m.

Reservations for Holiday Highlights will be available **Wednesday, November 8** at our normal rate of \$10 for Conservancy members and youth 17 and under; \$15 for the general public. For more information and to register, visit [laconservancy.org/tours](http://laconservancy.org/tours).

## Bring Holiday Visitors on a Downtown Excursion

Do you have family or friends visiting over the holidays? Conservancy walking tours are the perfect way to entertain out-of-town guests and introduce them to L.A.'s history and architecture.

In addition to our special Holiday Highlights tours in December (details above), our regular weekend walking tours will run throughout the holiday season as scheduled. With all that downtown L.A. has to offer, you can enjoy a whole day of exploration. Here are just a few suggestions.

### Shopping

**Saturday, November 25** (the Saturday after Thanksgiving) is Small Business Saturday. After bringing your Thanksgiving guests on one of our regular Saturday morning tours (Art Deco, Broadway Historic District, Historic Downtown, or Union Station), stay downtown and explore some of the neighborhood's unique stores. Two of our favorites:

- **MADE by DWC**, the Downtown Women's Center's boutique shop. The shop is located in their historic, Preservation Award-winning 1927 building. All sales proceeds go to programs and services for homeless and low-income

women. MADE by DWC is located at 438 South San Pedro Street. For details and hours, visit [madebydwc.org](http://madebydwc.org).

- **The Last Bookstore**, a unique bookstore with used and new books, vinyl records, and a local art collective with artist studios on the second floor. The Last Bookstore is located at 453 South Spring Street, in a 1914 former bank building in the heart of the Historic Core. For details and hours, visit [lastbookstorela.com](http://lastbookstorela.com).



This tunnel made of books is just one of many interesting sights in The Last Bookstore. Photo by Jennifer Boyer on Flickr.

### Ice Skating in Pershing Square

From November 10 through January 16, you can ice skate in downtown's Pershing Square. Our Art Deco, Broadway Historic District, Historic Downtown, Holiday Highlights, and Millennium Biltmore Hotel tours all meet in Pershing Square. We recommend going ice skating while you're in the neighborhood before or after the tour. For details, visit [holidayicerinkdowntownla.com](http://holidayicerinkdowntownla.com).

### Millennium Biltmore Hotel Tour

The Biltmore is known for its holiday decorations. Join us on Sunday afternoons for our Millennium Biltmore Hotel walking tour, and see this historic hotel decked out for the holidays. We will hold this tour as scheduled on both Christmas Eve and New Year's Eve, so it's the perfect opportunity to bring holiday guests downtown.

We hope to see you and your guests on a walking tour this holiday season!

## Docents Needed for Student Walking Tours

by Sana Ahmed



Students from Mayflower Elementary School tour Union Station. Photo from Conservancy archives.

In our efforts to bring history, architecture, and a passion for preservation to young people, the Conservancy will launch new walking tours this winter designed specifically for student groups. We've developed versions of our signature Historic Downtown and Union Station walking tours with a focus on youth engagement and learning for third to twelfth graders. These tours incorporate engaging activities and guiding questions to foster understanding and interaction throughout the experience. The tour content also aligns with California State and Los Angeles Unified School District (LAUSD) curricular standards across multiple disciplines, making it perfect for school field trips.

We are thrilled to provide a more enriching experience for student groups. To best deliver this new educational content, we'll hold training sessions in December for existing docents who would like to lead student tours, as well as new docent volunteers.

Whether or not you're already a walking tour docent, we encourage you to apply for our Student Walking Tour Docent Program if you're interested in igniting a passion in youth for Los Angeles history, preservation of historic spaces, and community awareness. Experience in education, though welcome, is not required. We invite all professional backgrounds.

Join us in this exciting new opportunity, and spread the word to those who enjoy working with youth!

### How to Apply

If you're interested or just curious, please submit a volunteer application online at [laconservancy.org/about/volunteers](http://laconservancy.org/about/volunteers). Be sure to indicate your interest in Student Walking Tours by checking the relevant box.

Submit your application by **noon on Monday, December 4** to be considered for the December training program.

Please complete the volunteer application even if you're already a walking tour docent. We've updated it and need to make sure we have the most accurate information.

### Training Schedule

Docent training for Student Walking Tours will take place over three days:

**Wednesday, December 6, 7–9 p.m.**

**Saturday, December 9, 9 a.m.–2 p.m.**

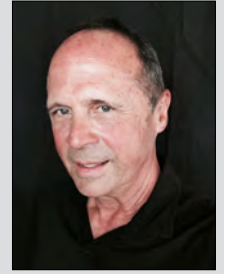
**Saturday, December 16, 9 a.m.–2 p.m.**

Attendance at all trainings is mandatory. If you can't make these sessions, stay tuned for news of additional training in spring 2018.

If you would like more information or have any questions, please contact Sana Ahmed, education specialist, at [sahmed@laconservancy.org](mailto:sahmed@laconservancy.org) or (213) 430-4216.

## VOLUNTEER PROFILE: CHRIS SPRY

In his own words: "Trained as an architect, I apprenticed in Florida, where I had a brief association with the Miami Design Preservation League at its startup in 1978. That was short-lived, as I relocated to Los Angeles later that year. Soon after, we bought a house in Silver Lake, a neighborhood whose architectural lineage is impressive. I was interested in all of it!



I joined the Conservancy in 1985 to support the Los Angeles Central Library preservation effort and to help save the Silver Lake and Rowena Reservoirs. Despite a heavy work schedule in facility management at TRW, now Northrop Grumman, I remained up on the Conservancy's causes.

You could say my "aha" moment hit during their 2009 tour, It's a Mod, Mod, Mod, Mod City. I then took almost every downtown walking tour the Conservancy offered. My retirement in 2015 proved well-timed, as I was accepted into the Conservancy's walking tour docent training class early the next year.

Leading the tours is addictive. Initially trained as an Art Deco docent, I soon wanted to lead other tours as well. I found that the crossover of knowledge from one tour to another gives me a stronger background in all of them. I love the physicality of the walking tour format, as well as the varied guests and docents I meet while doing the tours. Apart from tour docenting, I am an avid collector of miniature souvenir buildings, and am involved in the Souvenir Building Collector's Society."

## DONATE

continued from page 1

## LGBTQ Historic Places in L.A.

This year, we released three short films highlighting places with important LGBTQ history: *The Black Cat* in Silver Lake, *The Woman's Building* in Chinatown, and *Plummer Park's Great Hall/Long Hall* in West Hollywood. In 2018, we will expand the series to recognize additional sites in L.A. County.

## Chicano Moratorium

We've submitted a National Register nomination to document the history and significant places associated with the Chicano Moratorium Marches in East Los Angeles, which took place between 1969 and 1971.

## Help Us Do Even More

We believe that L.A. County's greatest strength and resource is its diversity. No single place or voice can encapsulate our region's history, and we are committed to uncovering the layers of history that have often been overlooked.

Please boost our efforts to recognize and protect significant places throughout L.A. County by giving a gift of any amount by **December 31**. You'll enjoy tax benefits and make even more of a difference in preserving the historic places that matter to all Angelenos. Donate online at [laconservancy.org/paf](http://laconservancy.org/paf). Thank you!



This year, the Pan American Bank building in unincorporated East Los Angeles was listed in the National Register of Historic Places following our successful nomination. Photo by Adrian Scott Fine/L.A. Conservancy.

## BEYOND ARCHITECTURE continued from page 1

As an organization dedicated to recognizing, preserving, and revitalizing the historic and cultural resources of Los Angeles County, the Conservancy strives to provide tour guests with the knowledge and context necessary to unlock meaning and appreciation for a particular area or building. We believe that telling the stories of a neighborhood's development from a physical, cultural, and social perspective is imperative in this effort.

Our past three special tours—*Exploring Chinatown: Past and Present*, *The Homes of View Park*, and *L.A.'s K-Town: Culture and Community* (November 3–5)—included specific educational components. Panel discussions and presentations by architects, community leaders, academics, and preservationists provide a fuller understanding of the buildings, blocks, and landscapes that tourgoers visit.

To help guests get a real feel for the neighborhoods, recent tours have included historic pub crawls and scavenger hunts. Activities organized by community members range from bake sales to Neighborhood Ambassadors (local volunteers stationed along the tour routes). While not entirely new to Conservancy tours, this direct participation by residents has grown far more common and integral to the experience.

Neighborhood organizations can offer tourgoers something the Conservancy simply can't: they bridge the gap between our interpretation of the built environment and the lives of its residents—their impact on the neighborhood, and vice versa. We are grateful for participation by organizations such as the Chinese American Museum, who opened on their day off just for the Chinatown tour, and the Korean Youth Community Center, whose youth groups worked at one of the Koreatown tour sites.

Preservation of the built environment is important not just because of architectural or historical criteria, but also because places contain the stories of the people who inhabit them. As historic preservationist Ned Kaufman wrote in *Place, Race, and Story: Essays on the Past and Future of Historic Preservation*, “Because stories live at once inside people and places, they remind us of an important truth: that the meaning of a place



To kick off our tour of View Park in 2016, an esteemed panel gave valuable context and varied perspectives. Pictured (l-r) are *Los Angeles Times* editorial writer Carla Hall; architectural historian Katie Horak; and Roland Wiley, an architect, longtime View Park resident, and past president of the Conservancy's board of directors. Photo by Steven Chavez.

lies neither wholly in its forms and materials nor wholly in the minds of the people who use it, but arises out of the interaction of the two.”

Nothing attests more to this truth of a place's duality than when we consider where, or what, the places we preserve and explore even are. What is Koreatown, really? Where is it? Who defines it? The City Council, with its official boundaries, or the community itself, which spills beyond them?

In planning our Koreatown tour, the Conservancy needed to examine what “Koreatown” means, from both a physical and a cultural standpoint. A tour of Koreatown with preservation at its heart must explore both of these arenas. It must tell the story of the grand Art Deco buildings that line Wilshire Boulevard, the Korean market used as a gathering place by shopkeepers during the L.A. riots, and the second-generation-run Oaxacan restaurant, housed in a building with the architecture of a traditional Korean palace.

All of them are Koreatown. All of them are worth preserving.

# AUGUST 9 / SEPTEMBER 24 MEMBERSHIP REPORT

The Los Angeles Conservancy would like to acknowledge the generous contributions of our new or upgrading Supporting members, and the new and renewing members of our Sustaining, Benefactor, and Cornerstone groups.

**CORPORATE MARBLE  
CORNERSTONE**  
(\$5,000 - \$9,999)  
Forest City Development

**CORPORATE GRANITE  
CORNERSTONE**  
(\$2,500 - \$4,999)  
AEG Real Estate  
Caruso Affiliated  
Holdings, LLC  
The Spirited Group

**GRANITE CORNERSTONE**  
(\$2,500 - \$4,999)  
Jan Westman

**CORPORATE LIMESTONE  
CORNERSTONE**  
(\$1,000 - \$2,499)  
Frederick Fisher & Partners  
Gruen Associates  
Marmol Radziner  
and Associates  
The Mike and Corky Hale  
Stoller Foundation  
Park & Velayos, LLP

**LIMESTONE  
CORNERSTONE**  
(\$1,000 - \$2,499)  
Alice Carr and  
Nathaniel Grouille  
Eric Moore  
Gary and Jeanne Newman  
Chris Regan and  
Susannah Keagle  
Ann and Robert Ronus  
Andree Valdry  
Kenneth and Jann Williams

**BENEFACTOR**  
(\$500 - \$999)  
Gail and Rod Crosby  
Steven Fader and  
Nalsey Tinberg

Judy McKee  
Rebecca Pynoos  
William Rendahl  
Michael Sfregola and  
Sue Shanley  
Susan Steinhauser and  
Daniel Greenberg  
George and Brad Takei  
Mary Alice Toomey

**SUSTAINING**  
(\$250 - \$499)  
Douglas Allan  
Martha Andreani  
Kathleen and  
Barry Blodgett  
Julie Lugo Cerra  
Donald and Zoe Cosgrove  
Michael and Joy Forbes

Gary T. Izumi  
Toula Kalatzis  
Azar Kattan  
Pauline Lemire  
Judith Levitt and  
Walter Koenig  
Leslie S. Lyndon and  
Bill Carey

Laura Massino  
Peg Meehan  
Ruth Mehringer  
Weston Milliken  
Bret Parsons  
Arline Pepp  
Arthur and Patricia Price

Michael Rabkin and  
Chip Tom  
Maria Romano  
Alex Rose  
Howard Smith

**SUPPORTING**  
(\$100 - \$249)  
Jolene Abbott  
Jason Ahn  
Eva and Rod Brettler  
Jodi Colburn  
Gail Conway  
Emma Cortes  
Carol Ellis  
Ron and  
Sheharazad Fleming

David Gajda  
Steven Giannotta  
Gary and Judy Gonser  
Jacqueline Ismen  
Letha Joan Kemper  
Alia Klein and  
Sandra Rubalcaba  
Marian Manzer  
Bret McMurrin  
Larry Miller  
Daniel and Alice Mitchell  
Mary Ann Morris and  
Robert Urling  
Su Part  
Bill and Katherine Rinehart  
Kitty Sarkissian  
Madeline Schilder  
Fran Solmor and  
David Gustin  
Aaron Tanaka and  
Jun Lugee  
Gail Wise and Gary Lemon  
Rachel Yoo

## Hugh M. Hefner (1926 – 2017)

Hugh Hefner, the founder of *Playboy* and a longtime Conservancy supporter, passed away on September 27 at age 91.

Hefner had a lifelong passion for classic film and sponsored an evening of our Last Remaining Seats film series (typically the silent film) for many years. He often brought a bus filled with friends to the screenings. We greatly appreciate his long-standing support.



Conservancy President and CEO Linda Dishman with Hugh Hefner at our 2010 screening of *American Graffiti*. Photo by Gary Leonard.



## MEMBERSHIP MATTERS

### DO WE HAVE YOUR EMAIL ADDRESS?

As a Conservancy member, you can enjoy members-only discounts and other perks throughout the year. However, sometimes these opportunities arise between issues of this newsletter, so you might miss out if you don't subscribe to our email lists (see page 2).

This summer, our City Hall walking tours sold out before members received their July/August newsletters. Our special walking tour, Lawrence Halprin: Reconnecting the Heart of Los Angeles, also sold out very quickly this fall, and our October 7 open house at the Formosa Café took place outside of our newsletter publication schedule. Subscribers to our Events and E-News email lists were among the first to know about these events.

We typically email members when member presales begin for special events such as our Kooratown tour or Last Remaining Seats series. We want you to take advantage of this membership perk, so please make sure we have your current email address on file (or consider opting back into email if you've opted out in the past).

Have you changed your email address? Give us a call at (213) 623-2489 or email [member@laconservancy.org](mailto:member@laconservancy.org), and make sure we have your current email address connected to your membership record. We can also sign you up for any of our email newsletters.

You can also update your contact information and email subscriptions at any time by signing into your website account at [laconservancy.org](http://laconservancy.org).

Thank you for being a valued member of the Conservancy!

## CONSERVANCY WALKING TOURS

Tours cost \$10 for Conservancy members and youth 17 and younger; \$15 for the general public.

Most tours require reservations. We accept walk-ins on some tours, subject to availability.

For details and reservations, visit [laconservancy.org/tours](http://laconservancy.org/tours). Questions? Contact us at [info@laconservancy.org](mailto:info@laconservancy.org) or (213) 623-2489.

### WALKING TOURS

#### Angelino Heights

First Saturday of every month

#### Art Deco

Every Saturday

#### Broadway Historic Theatre & Commercial District

Every Saturday

#### Historic Downtown

Every Saturday

#### Millennium Biltmore Hotel

Every Sunday

#### Union Station

Every Saturday

Customized group tours available by special arrangement. For details, visit [laconservancy.org/tours](http://laconservancy.org/tours) or contact us at [info@laconservancy.org](mailto:info@laconservancy.org) or (213) 623-2489.



### Los Angeles Conservancy

523 West Sixth Street, Suite 826

Los Angeles, California 90014

[laconservancy.org](http://laconservancy.org)

Nonprofit Org.  
US Postage Paid  
Santa Barbara, CA  
Permit #553

## TIME VALUE

ADDRESS SERVICE REQUESTED



For the latest updates and hundreds of historic places to explore, visit [laconservancy.org](http://laconservancy.org).

## UPCOMING EVENTS



Photo by Jessica Hodgdon/L.A. Conservancy.

### HOLIDAY HIGHLIGHTS WALKING TOUR

December 2–28

Explore some of downtown L.A.'s landmarks when they're all dressed up for the holidays! Learn more on page 4.



Photo by Adrian Scott Fine/L.A. Conservancy.

### PLEASE DONATE TO THE PRESERVATION ADVOCACY FUND

Donations to our Preservation Advocacy Fund go above and beyond membership dues to support our advocacy work, including our new LGBTQ film series (pictured). Details on page 1.



Past award recipient Hollenbeck Terrace. Photo courtesy KFA Architecture and Jim Simmons Photography.

### PRESERVATION AWARD APPLICATIONS

Due December 1

Each spring, we honor some of the best in recent preservation work at our annual Preservation Awards Luncheon. Nominate a completed project by December 1. Learn more on page 2.