



LOS ANGELES

# CONSERVANCY

# news

AWARENESS  
ASSISTANCE  
ACTION

VOLUME 31  
NUMBER 6

NOV | DEC 2009



Historic 1936 photo of the Michael White Adobe in San Marino. Built circa 1845, the building is the second oldest in San Marino and one of only thirty-nine remaining adobe structures in Los Angeles County. The two-story, wood-framed portion is a later addition that was removed in the 1940s. Photo courtesy Historic American Buildings Survey.

## San Marino School District Targeting Michael White Adobe for Demolition

by Mike Buhler

The San Marino Unified School District is proposing to demolish the 164-year-old Michael White Adobe on the campus of San Marino High School. Late last year, the school district announced plans to demolish or move the adobe—one of only thirty-nine remaining in Los Angeles County—as part of a project to expand the adjacent pool.

Although the pool project has been temporarily shelved due to budget woes, district officials continue to insist on immediate removal of the adobe to avoid perceived potential liability. Despite vocal opposition from a diverse cross-section of San Marino residents, preservation organizations, and former teachers, students, and parents, the district appears to be marching headlong toward demolition. The district has stated that it will not fund any other option, and it has even solicited contractor bids for demolition during the ongoing environmental review process.

For the past fifty years, the adobe has been surrounded on two sides by the high school pool. As required by state school safety regulations, the building is currently fenced on all sides and public access is limited by appointment only. Instead of embracing the adobe as a unique educational opportunity, the school district plans to replace it with asphalt. Given the rarity and exceptional significance of the Michael White Adobe, the Conservancy strongly believes that demolition should not be considered under any circumstances. Even assuming that there is any potential liability, a report prepared for the district's insurer recommends a number of common-sense, less drastic options to reduce perceived risks, from adding signage to increasing the height of the fence.

Please see ADOBE on page 6

## November 8 Fall Tour: It's a Mod, Mod, Mod, Mod City

by Trudi Sandmeier

"That can't be historic—I remember when it was built!"

Have you ever heard someone say that about a building near to your heart? Well, as time marches on and we get older, so do the places we love—unless they're torn down first. Join us on **November 8, 2009** as we explore relatively young landmarks of the 1960s, which are now coming of age and need protecting before it's too late.

In 2010, structures built in 1960 will reach the ripe old age of fifty, the widely accepted threshold for consideration as historic. The all-volunteer Modern Committee (ModCom) of the Los Angeles Conservancy has dealt with the "fifty-year hurdle" since its founding in 1984, long before the renaissance of mid-century modernism.

"Early on, the idea of preserving modernist resources was hard for many people to swallow. In the 1990s, buildings of the fifties gained credibility, but people couldn't even think about the sixties as a preservation issue," says John English, an architectural historian, former Conservancy board member, and longtime ModCom member. "Now, here we are! This is it! There is no longer any doubt that enough time has passed for these structures to merit preservation."

To celebrate this milestone, the Conservancy and ModCom present "The Sixties Turn 50," a nine-month educational program combining tours and other activities to raise awareness of Los Angeles' rich legacy of 1960s architecture and build a constituency for its preservation. Particularly

Please see THE SIXTIES on page 5

### I N S I D E

Conservancy News	2
Preservation Issues in the News	3, 6
Programs	4-5
Membership	7



**Los Angeles Conservancy**  
 523 W. Sixth Street, Suite 826  
 Los Angeles, California 90014  
 (213) 623-2489 Fax: (213) 623-3909  
 laconservancy.org

The Los Angeles Conservancy is a nonprofit membership organization that works through education and advocacy to recognize, preserve, and revitalize the historic architectural and cultural resources of Los Angeles County.

The Conservancy News is published bi-monthly.  
 Editor: Lisa M. Snyder  
 Lithography: The Prince of Printing

**Board of Directors**

- Thomas R. Miller, President
- Stephanie Kingsnorth, AIA, VP Advocacy
- Alison Crowell, VP Membership/Development
- Steven D. Archer, VP Education/Community Relations
- Charmaine Atherton, VP Finance/Administration
- Mitchell E. Abbott; Roberto E. Barragan;
- Clare De Briere; Barbara Flammang, AIA;
- Robert K. Foster; Dexter Henderson; Chris Iovenko;
- Maura M. Johnson; Diane Keaton; Lauren King;
- Michael LaFetra; Cedd Moses; Jackie Kim Park;
- Kevin Ratner; Ben Stiller; Trina Turk;
- Corinne Verdery; Donald Weggeman

**Advisory Council**

- Margaret Bach; Sally S. Beaudette; Bruce Corwin;
- Tim Disney; George A.V. Dunning; Amy Forbes;
- Douglas J. Gardner; Albert Greenstein; Curtis Hanson;
- Greg Harless; Robert S. Harris, FAIA; Mary Kay Hight;
- Dr. Thomas S. Hines; Kathryn Welch Howe;
- Huell Howser; Brenda Levin, FAIA; Ronald S. Lushing;
- Robert F. Maguire III; Christy McAvoy; Mimi Perloff;
- Frank Romero; Jack Rubens; Alan Sieroty;
- Alison Silver; Joel Wachs; John H. Welborne;
- Roland A. Wiley, AIA; Ken Williams;
- Dr. Robert W. Winter

**Lifetime Cornerstone**

- George A.V. Dunning
- Leonard Hill
- Stephen and Christy McAvoy
- John H. and Martha L. Welborne

**Staff**

- Linda Dishman, Executive Director
- Michael Buhler, Director of Advocacy
- Naomi Castillo, Receptionist
- Flora Chou, Preservation Advocate
- Constance Farrell, Communications Coordinator
- Connie Humberger, Volunteer Coordinator
- Adrienne Kisson, Director of Development
- Abby Matthews, Membership Assistant
- Annie Laskey, Program Manager
- Karina Muñiz, Community Outreach Coordinator
- Cindy Olnick, Director of Communications
- Willow Pappageorge, Administrative Manager
- Adam Rubin, Youth Outreach Coordinator
- Trudi Sandmeier, Director of Education
- Marcello Vavala, Preservation Associate

Thanks to the Getty Research Institute for access to the Julius Shulman photography archive.

**Letter from the President of the Board of Directors:**

# Thank You for Your Membership

*by Thom Miller*

People face tough choices in tough times. Like most (if not all) nonprofits, the Conservancy has seen how the recession has placed many of our members in the difficult position of having to postpone their renewal or downgrade their membership level. We fully understand the need to prioritize spending during periods of hardship, and we wish our supporters all the best in weathering this economic storm.

That said, the Conservancy remains a membership-based organization. Members are essential to what we do. You have made the Conservancy a driving force for preservation in Los Angeles. You provide the strength in numbers that is critical to influencing decisions on preservation issues and public policy. Membership dues comprise about a third of the Conservancy's operating funds. So when we say that each and every member counts, we truly mean it.

A number of members have found creative ways to maintain or even amplify their support. Some have begun submitting their dues in periodic installments over the year, allowing them to maintain their current level of giving in a more manageable way. Recently, longtime member Jim Miller (no relation) successfully nominated the Conservancy for a grant from his employer's program, the Disney Volunteer EARS Community Fund. Longtime members Murray Burns and Planaria Price donated their 2009 Economic Stimulus Check toward our efforts to strengthen code enforcement within Los Angeles' Historic Preservation Overlay Zones, and they encouraged others to follow suit. From using employers' matching gifts, to enrolling in the Ralphs/Food 4 Less Community Contribution Program, members who take extra steps like these to support preservation in Los Angeles are making a significant difference.

We are deeply grateful for your continued support, particularly now. In return for your support, I hope you will continue to take advantage of the benefits of your Conservancy membership, including exclusive discounts on walking tours and other events, and advance ticket sales for our Last Remaining Seats series of classic films in historic theatres.

On behalf of the Conservancy's staff and board of directors, I'd like to again offer our most sincere thanks for being an invaluable member of the Conservancy family. We wish you a happy, healthy holiday season and a new year filled with hope and promise.



## Give the Gift of Membership This Holiday Season

If you're looking for something unique for friends and family this holiday season, consider a Conservancy gift membership. It's a gift that gives all year, supporting our work while informing your loved ones about fun events and key issues in Los Angeles preservation. Each holiday gift membership arrives in a festively packaged welcome kit. To purchase, simply visit [laconservancy.org](http://laconservancy.org) or call (213) 430-4201. We also offer merchandise, including Conservancy logo baseball caps and American Apparel t-shirts from the 2009 season of Last Remaining Seats. We have heritage-themed books for all ages and an extremely affordable (around \$5) limited-edition Julius Shulman poster lithograph of the Seidenbaum Residence (1965). For details, visit [laconservancy.org](http://laconservancy.org). In addition to making quick work of your holiday shopping, you'll contribute directly to the Conservancy's mission of protecting and revitalizing L.A.'s historic resources. Thank you, and happy holidays!

## Conservancy Partners with Heritage Travel, Inc.

The Conservancy has launched a two-year partnership with Heritage Travel, Inc., a subsidiary of the National Trust for Historic Preservation. Heritage Travel is a new online community for travelers nationwide, offering one-stop information and planning for travel to historic destinations. We are excited to partner with Heritage Travel to increase visibility of the Conservancy's Walking Tour Program and other special tours. Visit [gozatic.com](http://gozatic.com) for information about historic travel destinations in Los Angeles and across the U.S.

# Preservation Issues In The News

by Mike Buhler, Flora Chou, Karina Muñiz, and Marcello Vavala

## Barlow Respiratory Hospital

Environmental review recently commenced for a massive project that would completely transform, and largely destroy, the historic Barlow Hospital next to Elysian Park. The hospital was established in 1902 as a tuberculosis sanatorium, and its bucolic setting with fresh air and open space was a key element of treatment. The twenty-five-acre hillside campus contained administrative and medical offices; patient bungalows with sleeping porches; dining, laundry, and recreational facilities; and workshops for occupational therapy. The site has thirty-two separate "contributing" (historic) buildings dating from 1902 to 1952, mostly in the Craftsman and Spanish Colonial Revival styles. It has been designated as Los Angeles Historic-Cultural Monument No. 504, and a historic resources evaluation in 1992 found the site eligible for listing as a National Register historic district.

In 2006, the hospital solicited proposals to redevelop the site and help fund the construction of a new hospital that would meet rigorous state seismic requirements adopted after the 1994 Northridge earthquake.

Although no development partner has been identified, the hospital is pursuing zoning changes and approvals through the environmental impact report (EIR) process. The proposed project would replace the existing hospital building with a new fifty-six-bed acute care hospital and an administrative/support facility. The majority of the large site would then be subdivided for 888 multi-family residential units totaling more than one million square feet. Of the thirty-two identified historically significant buildings, only nine would be retained in a small "historical zone."

On September 23, the Conservancy submitted comments on the notice of preparation of an EIR for the project, underscoring the need to consider a range of alternatives that retain the site's standing as a historic resource.

## Westwood Village Theatres

Recent news of the pending closure of several historic theatres in Westwood has prompted concern from many in the community. Two of the venues slated for closure include the Bruin and Fox Westwood Village Theatres, both of which are operated by Mann Theatres and occupy adjacent corners on Broxton Avenue. The move stems from a decision by Mann Theatres to forgo renewal of their leases, not from new

redevelopment plans.

The specter of several shuttered theatres in the once-thriving district has sparked widespread dismay over Westwood's continued viability as a major draw for moviegoers. Other prominent neighborhood movie venues have recently been lost or face an uncertain future. In 2008, the pristine National Theatre (1969) was hastily demolished after a landmark nomination was filed; the lot still sits vacant today. Citing declining business, the owner of the Majestic Crest listed the theatre for sale late last year. Fortunately, the Fox Westwood Village Theatre (1931), the Bruin Theatre (1937), and the Majestic Crest (1939, remodeled in 1987) have been designated as City of Los Angeles Historic-Cultural Monuments.

## Cultural Heritage Ordinance Revisions

On September 10, the City of Los Angeles Planning Commission voted seven to one to approve the Office of Historic Resources' (OHR) proposed revisions to the city's Cultural Heritage Ordinance. The most significant change would allow the city to deny, not merely delay, the demolition of a local landmark. Over the past eighteen months, the Conservancy has worked closely with OHR and a range of stake-

holders on the proposed revisions.

At the request of the Planning Commission in July, a coalition of preservationists met with Historic-Cultural Monument owners, business groups, and land use attorneys to seek consensus on the protection of historic interiors under the new ordinance. After well over a dozen hours of negotiations, a tentative agreement was reached to simply leave the status quo intact regarding interiors, whereby the Cultural Heritage Commission can review all interior work, but merely delay (not deny) inappropriate alterations.

Despite this apparent resolution, several members of the business community continued to protest the proposed ordinance at the September 10 hearing. Yet the preservation community came out in full force, with more than sixty members in attendance at the hearing and over 100 letters of support. After brief discussion, the Planning Commission voted overwhelmingly to move the ordinance forward.

The new ordinance will now go to the City Attorney's office for review before proceeding to the City Council's Planning and Land Use Management Committee, and then the full City Council for final approval. Thanks to everyone who has attended hearings and/or written letters during this lengthy and ongoing process. Your support has truly made a difference!

## Fairfax Theatre

The Fairfax Theatre, located at the northwest corner of Beverly Boulevard and Fairfax Avenue, is threatened with substantial demolition for a mixed-use building with seventy-one condominium units, retail, and parking.

The Art Deco theatre building, designed by architect W. C. Pennell and completed in 1929, spans 32,500 square feet and includes several retail storefronts. Distinguishing features include a zigzag-patterned roofline, elaborate terrazzo paving, and an integrated, stepped pylon at the theatre entrance. The proposed development would demolish all but the exterior walls of the theatre building, with the new construction rising above and differentiated in design.

Neighborhood residents, members of the Conservancy's Historic Theatres Committee, and the Los Angeles Historic Theatre Foundation have expressed concern over the potential loss of the theatre. The new Friends of the Fairfax Theatre coalition is working to nominate the building as a Historic-Cultural Monument. The Conservancy has met with the developer to learn about the proposed project and its effects on the theatre, and to explore opportunities for incorporating the historic building into the project. We will continue to follow this project closely as the environmental review process gets under way.



The Fairfax Theatre in 1930. Photo courtesy Security Pacific Collection/Los Angeles Public Library.

## Celebrate the Holidays with *It's a Wonderful Life*

The holidays are nearly here, and we hope you will join us for the Conservancy's fourth annual holiday film matinee, generously sponsored again this year by Bank of America. On Sunday, December 6, we'll present a 2 p.m. screening of Frank Capra's timeless classic *It's a Wonderful Life* (1947), starring James Stewart and Donna Reed. Bring your friends, family, and guardian angel to see this heartwarming film on the big screen at the magnificent Million Dollar Theatre, 307 South Broadway, in downtown Los Angeles.

Part of the Broadway Historic Theatre District, the Million Dollar Theatre was built in 1918 for theatre impresario Sid Grauman. The ornate Spanish Baroque interior was designed by William Woollett and originally seated 2,300 people. The building housing the theatre was designed by Albert C. Martin, with ornate terra-cotta sculptures by Jo Mora.

Tickets are \$10 for adults and \$5 for children twelve and under. Make an afternoon of it with holiday shopping and dining. At Clifton's Brookdale Cafeteria, 648 S. Broadway—a downtown classic since 1935—you'll receive a ten-percent discount by showing your film ticket! For details and tickets, visit [laconservancy.org](http://laconservancy.org).



Scene from *It's a Wonderful Life*. Photo courtesy Paramount Pictures.



LEFT: The youth of Adventures in Architecture explore the cornice details and rooftop signage of the 1912 Bryson Apartments. Photo by J. Eric Lynxwiler. RIGHT: On day one of Adventures in Architecture, the participants embarked on a scavenger hunt of public art in MacArthur Park, including a stop at the 1920 General Otis monument. Photo by LAC staff.



## After-School Program Explores the Heart of L.A.

by Adam Rubin

In August, the Conservancy completed its first summer session with Heart of Los Angeles (HOLA), an organization in the Westlake district dedicated to providing underserved youth with after-school programs in academics, arts, and athletics within a nurturing community environment.

The Adventures in Architecture: Exploring Westlake program, made possible by a contract from the Community Redevelopment Agency of Los Angeles, introduced a group of middle-school-aged kids to a selection of the historic and culturally significant buildings and parks in their neighborhood. Over nine weekly sessions, Conservancy staff led the group on guided explorations of the district, including stops at the Park Plaza Hotel, First Congregational Church, Westlake Theatre, and Bryson Apartments, where HOLA is headquartered.

Participants toured the buildings, learned the incredible stories behind them, and completed a range of related activities. The program opened with a scavenger hunt of public art in MacArthur Park, bringing kids into close contact with the decades-spanning collection of monuments and art installations dispersed throughout the massive park. Other highlights included a hike to the scenic rooftop of the ten-story Bryson Building; a "house-moving" relay race to illustrate how a downtown Victorian house was rescued from demolition, moved to Coronado Street, and converted into affordable family housing; and a *tamalada* (group tamale-making session) hosted by Sandi Romero, owner of Mama's Hot Tamales Café.

We greatly enjoyed working with the youth and staff of HOLA on Adventures in Architecture and are already looking forward to continuing the program next summer!

## Conservancy Member Discount for *Bleeding Through*

The Conservancy is proud to partner with theater company About...Productions on an exciting new event. *Bleeding Through* is a theatrical layering of live music, video, and interactive setting that uncovers the narrative ghosts of L.A.'s historic Angelino Heights neighborhood and the adjacent downtown area—a neighborhood where more cinematic "murders" have occurred than anywhere else in the world. Written and directed by Theresa Chavez and Rose Portillo, and adapted from Norman Klein's highly praised novella, this noir-influenced theaterwork explores the shaping of a city's memory by commonplace experiences, chronicled history, and cinematic influences.

The production runs October 23 - November 22, 2009 at Shakespeare Festival/L.A., 1238 W. First Street, downtown Los Angeles. As a Conservancy member, you can use the code **LAC5** for a \$5 discount on your ticket purchase. Offer valid for all performances, including the Opening Night Noir Costume Party on October 31. For details and tickets, visit [aboutpd.org](http://aboutpd.org) or call (800) 595-4TIX (4849).

**THE SIXTIES** continued from page 1

exciting is a new online component in which you can vote for your favorite sixties buildings, share photos, and explore an interactive timeline of the decade that largely shaped Los Angeles as a modern metropolis.

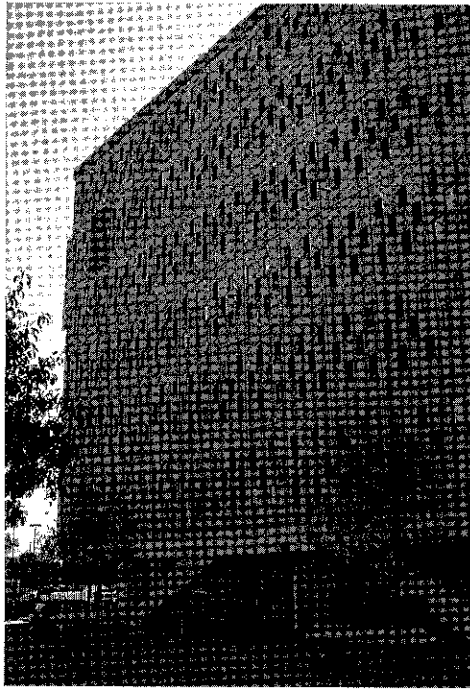
"It was during the sixties that Los Angeles first became a 'world city,'" says English. "It was also when we fully realized much of the postwar promise that had been building up steam throughout the late forties and fifties. Commercial architects really hit their stride in terms of large-scale development. And Los Angeles International Airport embodied the jet age. When you arrived in Los Angeles, you knew that Los Angeles had arrived."

Indeed, the iconic structure that still welcomes millions to Los Angeles is the 1961 LAX Theme Building designed by powerhouse architects William Pereira, Charles Luckman, Paul Williams, and Welton Becket. Floating among intersecting arches is a central pod containing the popular Encounter Restaurant, topped by an outdoor observation deck that provides a bird's-eye view of the airport. The building was designated as Los Angeles Historic-Cultural Monument #570 in 1992. The LAX Theme Building is finishing a multi-year stabilization and restoration project. As an extremely special treat, guests on the November 8 tour will be able to visit the building's observation deck for the first time since 2001.

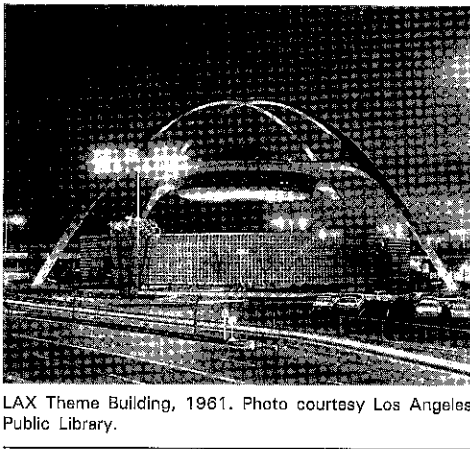
In addition to the Theme Building, the tour will highlight several sixties gems in the South Bay area of Greater Los Angeles. Due largely to its crucial role in the aviation and aerospace industries that boomed during the 1960s, this area boasts a wide variety of significant sites from the era. Just one example is the 1963 IBM Aerospace Headquarters Building by architects Eliot Noyes, A. Quincy Jones, and Frederick Emmons. Designed to resemble a then-groundbreaking computer punch card, the building now serves as educational space for the Otis College of Art and Design. Other tour sites include St. Jerome Catholic Church in Westchester, an exceptional example of '60s religious architecture; and The Proud Bird Restaurant, an aviation-themed "destination restaurant" overlooking the LAX runways.

The Mod, Mod, Mod, Mod City tour will run from 10 a.m. to 4 p.m. on **Sunday, November 8**. At check in, tourgoers will receive a tour booklet detailing the tour route and interesting sites to see along the way. Official tour stops will feature a docent-led tour of the site. Tickets are \$25 for Conservancy members and \$30 for the general public. "It's a Mod, Mod, Mod, Mod City" is generously sponsored by City National Bank, Los Angeles World Airports, and the National Trust for Historic Preservation.

For tour information and tickets, and to explore the new online features of "The Sixties Turn 50," visit [laconservancy.org/sixties](http://laconservancy.org/sixties).



IBM Aerospace Headquarters Building (now Otis College of Art and Design), 1965. Photo by LAC staff.



LAX Theme Building, 1961. Photo courtesy Los Angeles Public Library.

**Partner Events**

Don't miss these sixties-themed events by our partner organizations! Visit [laconservancy.org/sixties](http://laconservancy.org/sixties) for details about these and other upcoming events.

**Jules Verne Festival Presents *The Wild Bunch* at the Million Dollar Theatre**

Thursday, November 12, 7 p.m.  
Million Dollar Theatre  
307 S. Broadway, Downtown L.A.

*The Wild Bunch* (1969) is loose again! Celebrate the fortieth anniversary of this Sam Peckinpah classic western with a once-in-a-lifetime event. Gathering at the 1918 Million Dollar Theatre on Broadway will be Academy Award-winning star Ernest Borgnine, co-stars Bo Hopkins, L.Q. Jones, and Paul Harper, members of the Peckinpah family, film historians, and even some real cowboys! Admission is only \$10. For tickets, visit [julesverne.org](http://julesverne.org).

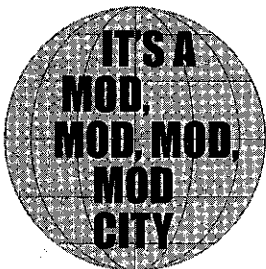
**Road to Freedom: Photographs of the Civil Rights Movement, 1956-1968**

November 19 - December 31, 2009  
Skirball Cultural Center

Members of the Los Angeles Conservancy enjoy 2-for-1 admission to the exhibition *Road to Freedom: Photographs of the Civil Rights Movement, 1956-1968* at the Skirball Cultural Center. Also view the related exhibitions: *Breach of Peace: Photographs of Freedom Riders* by Eric Etheridge; *An Idea Called Tomorrow II*; and *Images for Human Rights: Student Voices*. Valid November 19 - December 31, 2009 except December 6. Tickets at the door. Mention promo code 99604 at admissions desk on day of visit. Offer admits up to four visitors per discounted transaction. Includes admission to all galleries, including Noah's Ark at the Skirball (subject to availability). For more information, visit [skirball.org](http://skirball.org) or call: (310) 440-4500.



**The Sixties Turn 50**



# Volunteer Profile: JANIS ASHLEY

by Connie Humbarger

JANIS ASHLEY is a native Angeleno and self-described Valley girl. She is an active Conservancy walking tour docent and has served as a mentor to trainees in the walking tour docent training classes. Janis is energetic, enthusiastic, reliable, and always up for a new adventure.



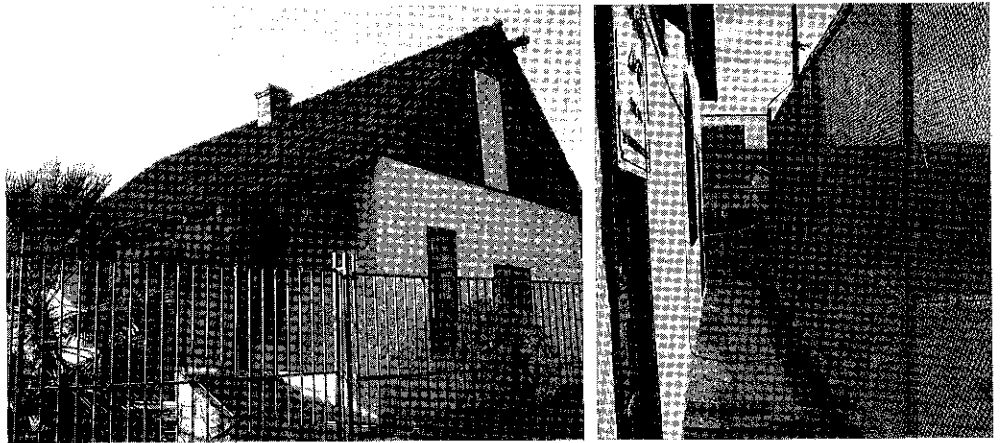
She attended California Lutheran College and California University at Northridge, receiving a bachelor's degree in marketing. Janis has had an interesting and varied career working for the Dr. Pepper/Coca-Cola research library, the William S. Hart Museum, the Nethercutt Collection, and currently as branch manager for an investment company.

Janis was introduced to the Conservancy when she took a walking tour with the Natural History Museum, followed by a bus tour of Los Angeles with Hart Museum interns. Intrigued by our tours, she signed up for training and became a walking tour docent.

Janis also volunteers for many of our special tours. She is someone you can always count on to know the material and complete her assignment. She's also ready, willing, and able to pitch in and help wherever needed.

Janis has been a competitive Highland dancer, and she performed with a Scottish Country dance group. More recently, she assisted with a documentary about musician Emmitt Rhodes which was screened at the Rome International Film Festival in October 2009.

Way to go, Janis!



LEFT: The Michael White Adobe is currently surrounded by a fence per a school safety requirement. RIGHT: The school's pool is located feet from the adobe. Photos by LAC staff.

## ADOBE continued from page 1

### Second-Oldest Structure in San Marino

Michael White was an English sailor who arrived in California in 1829. Soon after marrying Maria del Rosaria Guillien, the daughter of an influential figure at San Gabriel Mission, White received a land grant of about seventy-five acres north of the San Gabriel Mission. The modest adobe was built on this land circa 1845, and it stands today as the second-oldest structure in San Marino.

The Michael White Adobe is an excellent example of Los Angeles County's earliest surviving architectural heritage. The tradition of adobe construction, introduced during the Spanish era and necessitated by the region's scarcity of timber, remained the predominant method of building in the area until American annexation of California in 1848. The technology and facilities for manufacturing fired brick would not appear in the Los Angeles region until the 1850s.

### Unique Educational Potential

The San Marino School District acquired the adobe and its remaining land in 1928 for a future school. Construction on K. L. Carver Elementary School started on the property after World War II. In 1952, Mr. Carver, a local civic leader and school board member, led efforts to restore the adobe. In the mid-1950s, San Marino High School relocated to the property and constructed the pool and athletic facilities that currently surround the adobe. As recently as 1998, with the permission of the school district, the San Marino Historical Society led regular tours of the adobe for students and local residents.

The adobe's location on a high school campus offers an unparalleled opportunity to further the district's educational mission and teach early California history through a tangible, authentic artifact. With today's awareness of environmental responsibility and sustainability, the adobe is also relevant to discussions about how local, renewable resources were once used for building materials and how people learned to address local climate conditions.

The Conservancy submitted comments on the demolition project's draft environmental impact report (EIR) on September 23. Comments were also submitted by Pasadena Heritage, the California Preservation Foundation, the California Office of Historic Preservation, and the National Trust for Historic Preservation, among others. These comments allege multiple violations of the California Environmental Quality Act, including actions taken by the district that reveal a pre-commitment to demolition and the district's decision to redefine the project as "demolition only" in the middle of the environmental review process. The Conservancy's comments argue that the newly truncated project description effectively excludes all preservation alternatives from consideration because they will not, by definition, meet the district's primary objective to raze the adobe. Despite these legal flaws and an emerging chorus of opposition, the school board is nonetheless scheduled to certify the final EIR on October 27, 2009.



Historic photo of the adobe. Photo courtesy Historic American Buildings Survey.

# JULY 14 / SEPTEMBER 16 MEMBERSHIP REPORT

The Los Angeles Conservancy would like to acknowledge the generous contributions of our new Supporting members, and the new and renewing members of our Sustaining, Benefactor, and Cornerstone groups.

CORPORATE MARBLE CORNERSTONE (\$5,000 - \$9,999)  
Maguire Properties

MARBLE CORNERSTONE (\$5,000 - \$9,999)  
Edward F. Limato

CORPORATE GRANITE CORNERSTONE (\$2,500 - \$4,999)  
BA Studios, LLC  
University of Southern California

GRANITE CORNERSTONE (\$2,500 - \$4,999)  
Claire and William Bogaard  
Ronald S. Lushing

CORPORATE LIMESTONE CORNERSTONE (\$1,000 - \$2,499)  
Chattel Architecture, Planning & Preservation, Inc.  
Sunset Junction Shopping Center

LIMESTONE CORNERSTONE (\$1,000 - \$2,499)  
Glen Dake  
Clare De Briere  
Leslie Heumann  
Kenneth Korman  
Valerie E. Lyons and Jay Judson  
James H. McMath  
Ron de Salvo  
Patricia Mansur Simpson  
Mary Jean and Walter J. Thomson  
Jan Westman  
Peg Yorkin

BENEFACTOR (\$500 - \$999)  
Anonymous  
Englekirk & Sabol Engineers  
William Hickman  
Meg and Lawrence Kasden  
Linda and Michael Keston  
Hilary Stevens

SUSTAINING (\$250)  
Cecile Bartman  
Ralph Bijou  
Lorelei and Robert Boswell  
Rhonda and John Cano

Karen Constine  
Suzanne and Frank Cooper  
Donald and Zoe Cosgrove  
Renee Dake and Brian Wilson  
Kevin DePrimio  
Elaine P. Douglas  
Robyn Field and Anthony O'Carroll  
Roberta Greenwood  
Luis G. Hoyos  
LAB4 Foundation  
Alice and Nahum Lainer  
Deanne and Allen Neiman  
Sue Parilla  
Patricia Ahmann Foundation  
Jane and Don Pinkerton  
Joyce Rosenthal  
Jack Rubens  
Leon Schulzinger and Linda Pennell  
Kevin Sharkey  
Mark Sherman  
Mary Anne Singer  
David L. Smith  
Joseph Spencer

SUPPORTING (\$100)  
David Beaulieu  
Veronica and Scott Boone  
Mary Carmona  
Margaret Carothers  
Linda Clelland  
Gary Colombo  
Larry Coon and Mark Gotlieb  
Betty C. Duckman  
Judith and Robert Edwards  
Adam Greco  
Martha Houk  
Dr. Judith Hyman  
Alex Kanwetz  
Ken Krug  
Edward Lodgen  
Lynn Palmer  
Andrew Pannell  
Cathryn Taylor  
Kevin Tvedt  
Kristi Yuzuki

## Preservation Advocacy Fund: The Perfect Year-End Contribution

For over thirty years, the Los Angeles Conservancy has worked to keep L.A.'s built history alive. We've protected Art Deco masterpieces like the Wiltern Theatre and modern jewels like the Cinerama Dome in Hollywood. Los Angeles' diverse resources are all a part of our city's historic fabric and deserve the chance to live on as tangible examples of that history. The Conservancy's Preservation Advocacy Fund (PAF) was established specifically to support our work on unanticipated preservation issues.

In late 2008, when Next Century Associates announced their plans to raze the Century Plaza Hotel (Minoru Yamasaki, 1966), the Conservancy immediately went into action to bring the hotel's significance to light. The Century Plaza Hotel is an exceptional example of 1960s architecture and has been a touchstone for the community since its opening. The effort to save the hotel strongly relies on membership support but is bolstered by contributions to the PAF.

Please keep the PAF in mind as you plan your year-end giving. Your support will provide an extra gift, enabling us to continue creating a voice for the Century Plaza Hotel and other threatened treasures. We appreciate your generosity and attention to the key preservation issues that shape Los Angeles' legacy. To contribute to the PAF, visit <http://lac.laconservancy.org/paf> or call (213) 430-4204. Thank you for your continued support.



## MEMBERSHIP APPLICATION

Join or renew at [laconservancy.org](http://laconservancy.org)

### MEMBERSHIP TYPE (please check one)

New

Renewal

Gift

### MEMBERSHIP LEVEL (please check one)

Individual (\$40)

Dual/Household (\$60)

Supporting (\$100)

Sustaining (\$250)

Benefactor (\$500)

Cornerstone (\$1,000, \$2,500, \$5,000, \$10,000)

### MEMBERSHIP INFORMATION

Name \_\_\_\_\_

Address \_\_\_\_\_

City, State, Zip \_\_\_\_\_

Daytime Ph \_\_\_\_\_

E-mail \_\_\_\_\_

Please send me Conservancy E-News

### FOR GIFT MEMBERSHIPS

Please enter your contact information so that we may acknowledge your gift.

Given by \_\_\_\_\_

Address \_\_\_\_\_

City, St, Zip \_\_\_\_\_

Daytime Ph \_\_\_\_\_

### PAYMENT OPTIONS

I've enclosed my tax deductible \* payment of \$ \_\_\_\_\_ by \_\_\_\_\_

Check payable to L.A. Conservancy

Credit Card (Visa, MasterCard, AmEx or Discover)

Card # \_\_\_\_\_

Exp. Date \_\_\_\_\_

VCode \_\_\_\_\_

Name on card \_\_\_\_\_

Signature \_\_\_\_\_

\* Less value of premiums; call for details

The Los Angeles Conservancy is a 501 (c) (3) nonprofit organization. Please mail or fax (credit card payments) this form to receive your membership card entitling you to a full year of benefits. Thank you, and welcome to the Los Angeles Conservancy!

Los Angeles Conservancy

Attn: Membership

523 West Sixth Street, Suite 826

Los Angeles, CA 90014

(213) 623-2489 • fax: (213) 623-3909

**CONSERVANCY  
WALKING TOURS**

Walking tours begin at 10 a.m. except where noted. Tours are \$5 for Conservancy members and children twelve and under, \$10 for the general public. Walk-ins are accepted on most tours. Prepayment is required on Angelino Heights, Biltmore Hotel, and Broadway Historic Theatre District. For details and reservations, visit [laconservancy.org](http://laconservancy.org) or call (213) 623-2489.

**WEEKLY TOURS**

- Art Deco Every Saturday
- Biltmore Hotel Every Sunday, 2 p.m.
- Broadway Historic Theatre District Every Saturday
- Historic Core Every Saturday

**BI-WEEKLY AND MONTHLY TOURS**

- Angelino Heights First Saturday
- Downtown Renaissance: Spring & Main Second and Fourth Saturdays
- Evolving Skyline First and Third Saturdays
- Union Station Third Saturday
- Union Station Family Tour Fourth Saturday, 11 a.m.

Please note that due to the holiday, on Dec. 26 we will offer only the Art Deco and Union Station Family tours.



**Los Angeles Conservancy**  
523 West Sixth Street, Suite 826  
Los Angeles, California 90014  
[laconservancy.org](http://laconservancy.org)

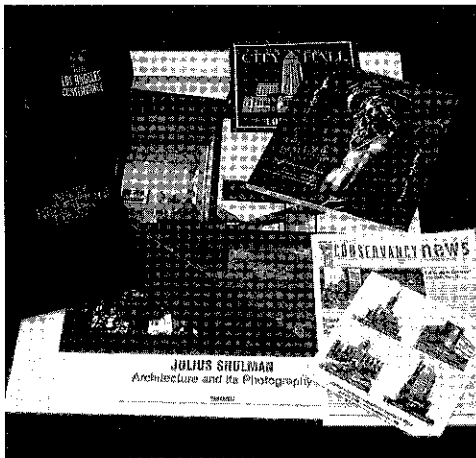
Nonprofit  
Organization  
U.S. Postage  
PAID  
Los Angeles, CA  
Permit No. 36628

**TIME VALUE**

ADDRESS SERVICE REQUESTED



**UPCOMING EVENTS**

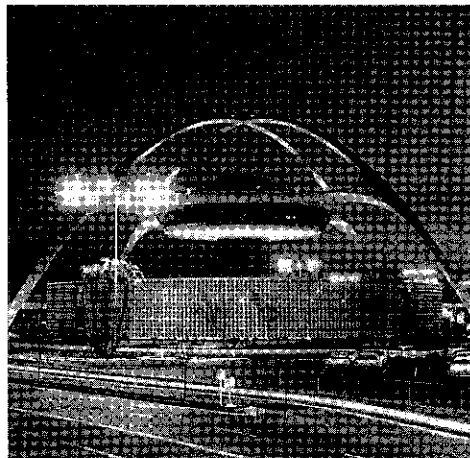


LAC staff

**HOLIDAY GIFTS WITH A PURPOSE**

Los Angeles Conservancy merchandise at [laconservancy.org](http://laconservancy.org)

For holiday gifts that make a difference, consider Conservancy memberships or merchandise. They're easy, affordable, and instrumental in protecting and preserving our rich architectural heritage. See page 2 for details.



Los Angeles Public Library

**"IT'S A MOD, MOD, MOD, MOD CITY" TOUR**

Sunday, November 8, 10 a.m. - 4 p.m.  
Various sites; South Bay

Explore '60s buildings that have played an integral role in the city's history, including the iconic LAX Theme Building. This one-time tour is part of "The Sixties Turn 50" program. See page 1 for details.



Paramount Pictures

**HOLIDAY MATINEE**

Sunday, December 6; 2 p.m.  
Million Dollar Theatre  
307 S. Broadway

Ring in the holiday season with the Conservancy at our annual holiday matinee. Join us for a screening of *It's a Wonderful Life* at the beautiful 1918 Million Dollar Theatre. See page 4 for details.